

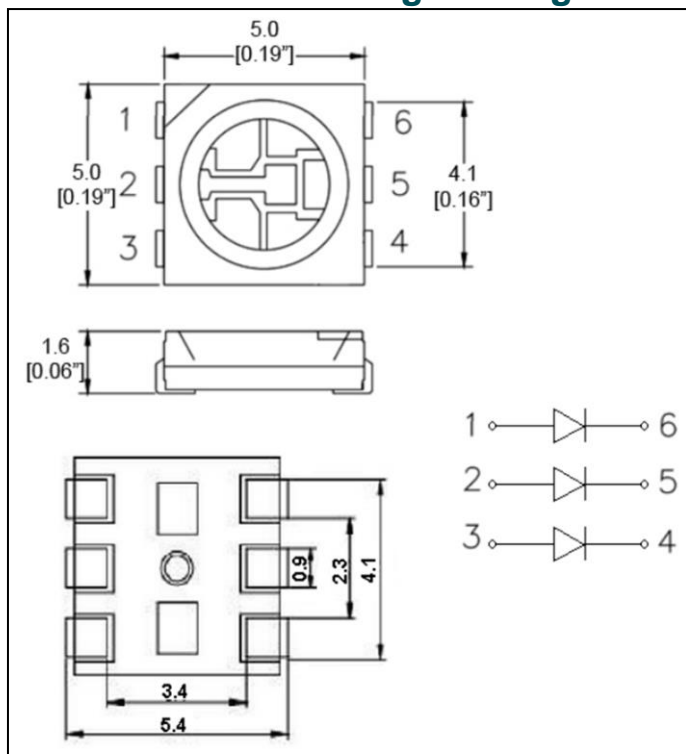
LEDs

5050 SMD – Orange

HL-9121

Package Configuration

Descriptions:
Emitting Color: Orange
Device Outline: 5.0x5.0x1.6mm
Lens Type: Water Clear



Absolute Maximum Ratings ($T_a=25^{\circ}\text{C}$)

Parameter	Max.	Unit.
Peak Forward Current (1/10 Duty Cycle, 0.1ms Pulse Width)	100	mA
Continuous Forward Current	(3x20)	mA
Reverse Voltage	5	V
Storage/Operating Temperature Range	-40 °C to +85°C	
Power Dissipation	100mW	
Lead Soldering Temperature[4mm(.157") From Body]	250°C for 5 Seconds	

Electrical and optical characteristics

Parameter	Symbol	Min.	Typ.	Max.	Unit.	Test Condition
Luminous Intensity	I_v	-	1600	-	mcd	$I_F=60\text{mA}$ (3x20mA)
Viewing Angle	$2\theta_{1/2}$	-	120	-	deg.	
Dominant Wavelength	-	-	605	-	nm	