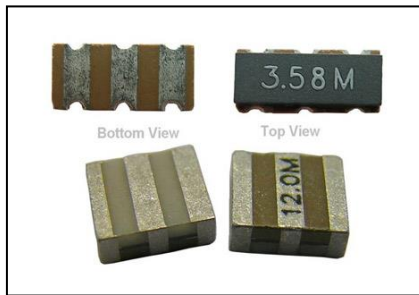


ZTACC, CS, CV, CW & ZTTCC, CS, CV, CW Series

2.00 to 50.0MHz



The ZTB series ceramic resonator is a low profile frequency control product of low frequency from 190KHz to 1250KHz. This product has a more competitive price than quartz crystal, that make it a substitute for the quartz crystal when need lower price.

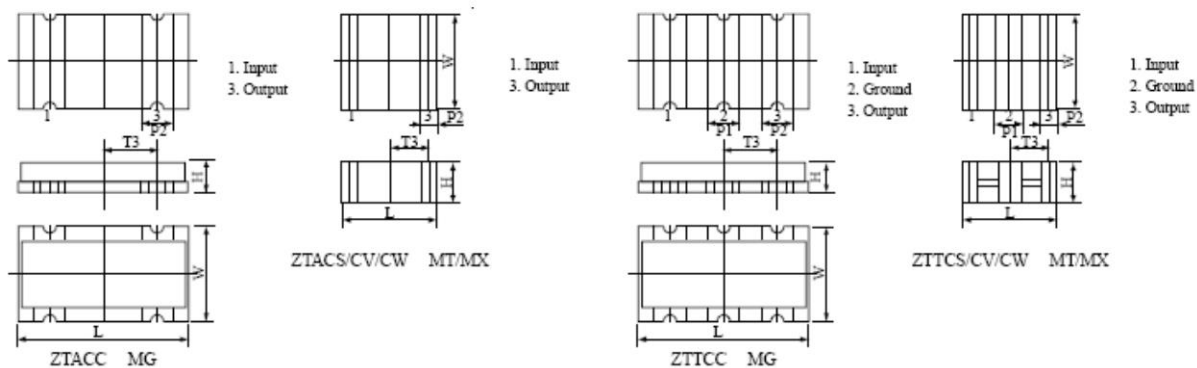
FEATURES

- Lower Cost
- Good Stability
- Wide Frequency Range
- Small compact size

Electrical Specifications

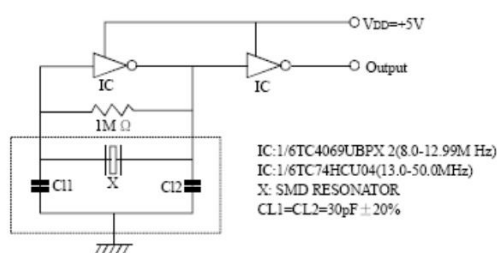
Parameter	ZTACC/ZTTCC	ZTA&ZTTCS/CV-MT	ZTA&ZTTCS/CV-MX	ZTA&ZTTCCW-MX
Frequency Range (MHz)	2.00 to 6.99	7.00 to 12.99	13.00 to 50.00	20.00 to 50.00
Frequency Accuracy (at 25°C) (%)	±0.5	±0.5	±0.5	±0.5
Temperature Stability (-20°C to +80°C) (%)	±0.3	±0.4	±0.4	±0.3
Aging for ten years (%)	±0.3	±0.3	±0.3	±0.3
Resonator Resistance (Ω) Max	80	30	35	35
Withstanding Voltage (5 seconds Max)	100V _{DC}	100V _{DC}	100V _{DC}	100V _{DC}
Insulation Resistance Minimum (at 10V _{DC})	5 x 10 ⁸ Ω	5 x 10 ⁸ Ω	5 x 10 ⁸ Ω	5 x 10 ⁸ Ω

Mechanical Dimension



Parameter	Dimensions								
	L	W	H	P1	P2	T1	T2	T3	W1
ZTACC, ZTTCC-MG	7.4±0.3	3.4±0.3	1.8±0.3	1.2±0.3	1.2±0.3	1.5±0.3	1.7±0.3	2.5±0.3	3.0±0.3
ZTACS-ZTTCS-MT/MX	4.7±0.2	4.1±0.2	1.6±0.3	1.0±0.4	0.8±0.4	1.3±0.2	0.8±0.2	0.8±0.2	5.1±0.2
ZTACV-ZTTCV-MT/MX	3.7±0.2	3.1±0.2	1.2±0.3	0.9±0.3	0.7±0.3	1.0±0.2	0.7±0.2	1.5±0.2	4.1±0.2
ZTACW,ZTTCCW-MT/MX	2.5±0.2	2.0±0.2	1.5±0.2	0.4±0.2	0.4±0.2	0.5±0.2	0.5±0.2	1.0±0.2	2.6±0.2

Test Circuit for MOS IC



Recommended Solder Pattern

